

Exploring Fern Ridge Lake by Canoe or Kayak

Horst Lueck

canoe@freeshell.org
http://canoe.freeshell.org

2012-04-10

Fern Ridge Library

http://canoe.freeshell.org/guides/FRL-HL-2012.pdf

Thanks to LibreOffice Presenter/Impress

3-part Presentation

- 1) Hands-on part with real gear
- 2) Launch Sites, Forecast (precipitation, wind), sunset/moon rise; specific routes
- 3) Slide show of trips

Boats and Gear

(hands-on part, selected aspects only)

Safety first!

- Life vest (PFD) -- wear it!
- Whistle, head light if boating at dusk (to see and to be seen)
- Floatation for your boat (in case you capsize)
- Transportation: “V” straps in front and back, in addition to roof rack straps
- Don't drink
- Bring water, sun screen, hat/visor, mosquito repellent, spare dry cloth
- Dry bags, water-proof camera/electronics container, TP

Boats

What should I buy? – can I use my old...(fill in)...?

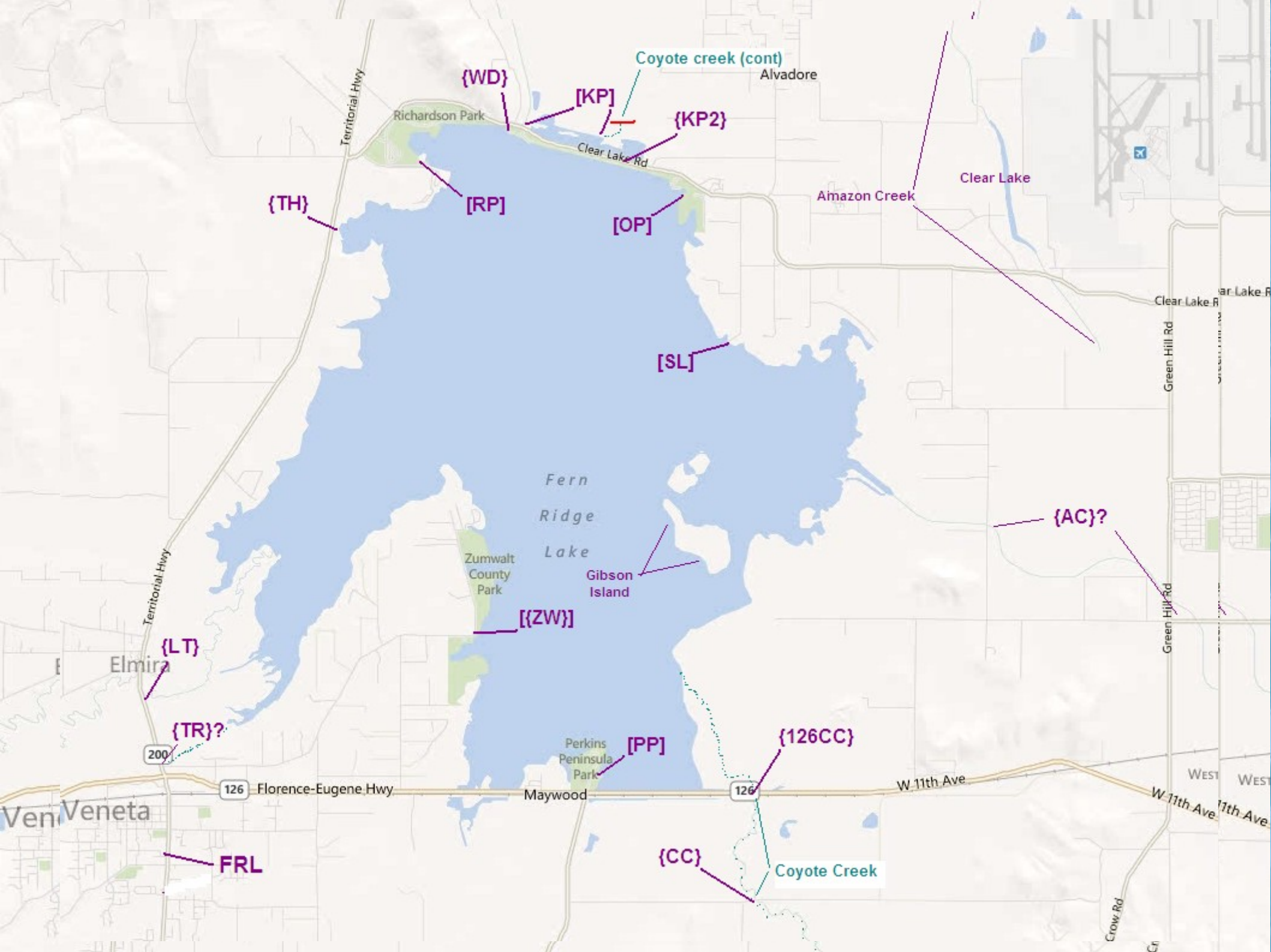
Overview

- Kayaks: sea kayak, hard shell
- Canoes (solo/tandem, river/flat-water)
- Sit-on-tops, inexpressive plastic boats
- Inflatable Kayaks (IK)
- Invasive Species permit required for boats 10 ft or longer
- Kind of boat should match area paddled, weather conditions (wind), and other boats in group

Launch Sites

Things to consider:

- Fee/permit required ?
- Locked by gate (seasonal/after dusk)
- Safety of parked cars (never display anything of value)
- Charm of site, background noise, power boats (strong wakes)
- Mosquito density (woody, less wind-exposed areas)
- Low water: unreachable, or muddy



Coyote creek (cont)

Alvadore

{WD}

[KP]

{KP2}

Richardson Park

Clear Lake Rd

Clear Lake

Amazon Creek

{TH}

[RP]

[OP]

Clear Lake R

Green Hill Rd

[SL]

Fern
Ridge
Lake

{AC}?

Zumwalt
County
Park

Gibson
Island

[[ZW]]

Green Hill Rd

{LT}

Elmira

{TR}?

200

[PP]

Perkins
Peninsula
Park

{126CC}

Maywood

126

W 11th Ave

WEST

WEST

Ven Veneta

126 Florence-Eugene Hwy

W 11th Ave

11th Ave

FRL

{CC}

Coyote Creek

Crow Rd

Cr

Launch Sites [with gate]

- Orchard Point [OP]
- Shore Lane [SL] no-fee
- Perkins Peninsula [PP]
- Zumwalt [ZW] (no-fee launch access outside of gate)
- Richardson Park [RP]
- Kirk Pond [KP] / (no-fee parking possible outside of gate)

Launch Sites {without gate}

- Kirk Pond {KP2}
- Hwy-126/Coyote Creek {126CC} near Railroad Bridge
- Coyote Creek {CC}, Cantrell Rd, nice site with picnic table, remote-unwatched, mosquitoes
- Territorial Hwy / Long Tom River {LT}, semi-official, dog walkers, bird watchers, mosquitoes
- West of Dam {WD} – parking sign: "Cars with Trailers only"
- (Amazon Creek Diversion Channel {AC}? -- not yet explored)
- (Territorial Hwy, near Hwy-126 {TR}? -- not yet explored)
- Territorial Hwy, {TH} – suggested by audience at presentation; roadside parking

Planning: weather, sunset, moon rise

Getting more out of resources: Understanding patterns and looking for evolving trends

- Precipitation
- Wind
- Cloud cover (full moon paddles, photography)
- Temperature
- River flow and reservoir levels
- Sunset and moon rise

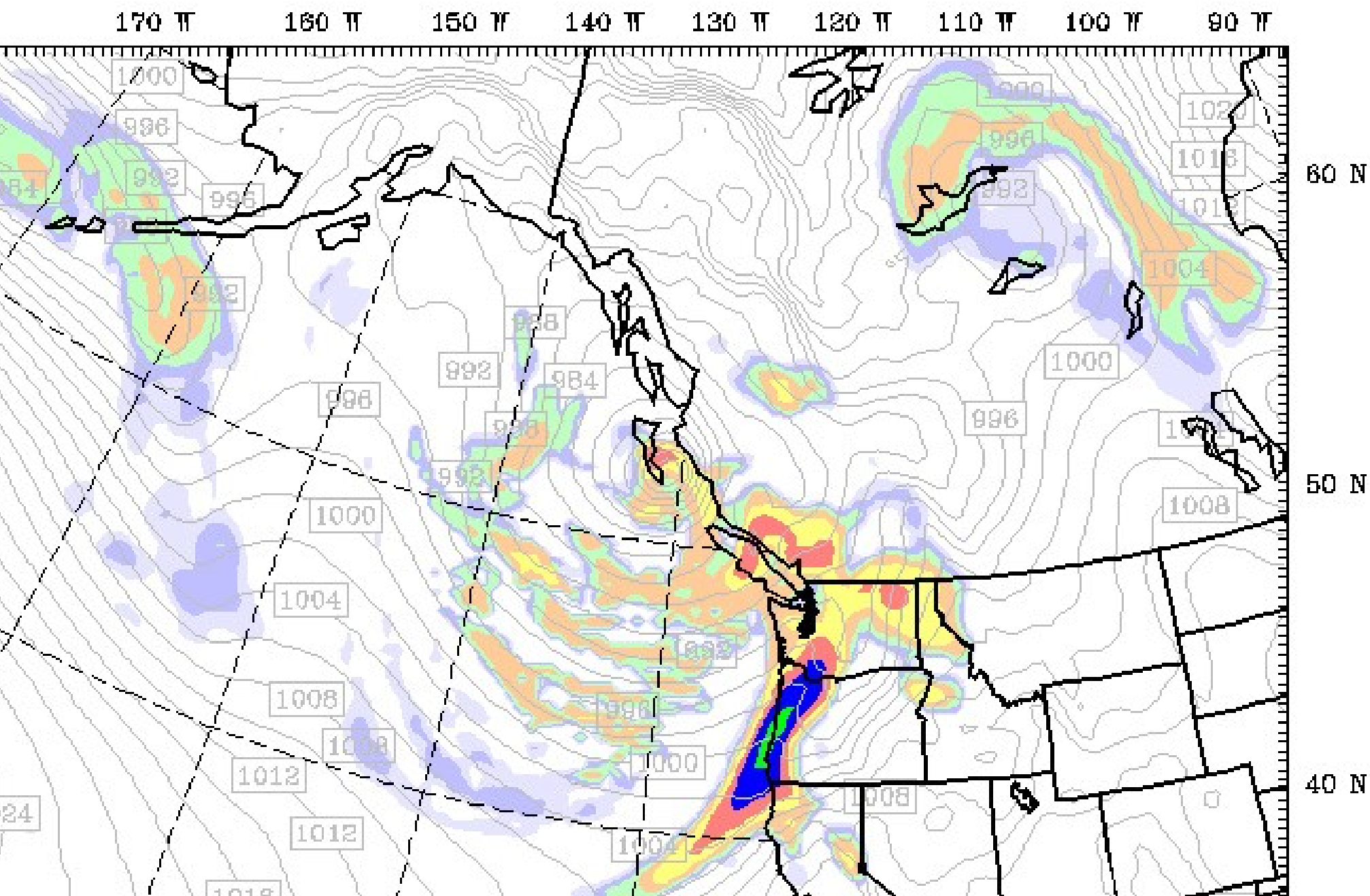
36km Domain

Init: 12 UTC Sat 10 Mar 12

Valid: 03 UTC Tue 13 Mar 12 (20 PDT Mon 12 Mar 12)

in past 3 hrs (.01in)

Pressure (hPa)

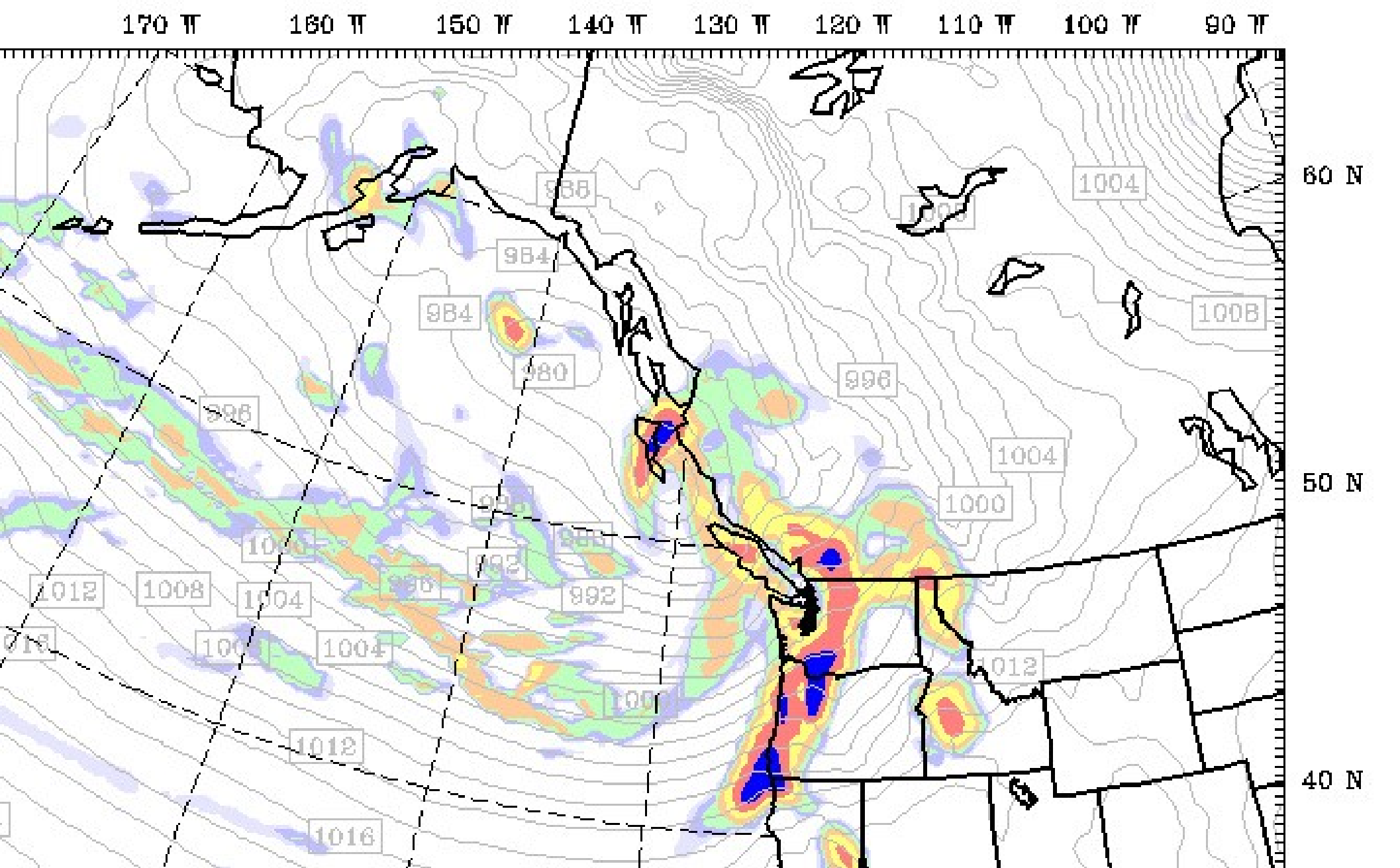


36km Domain

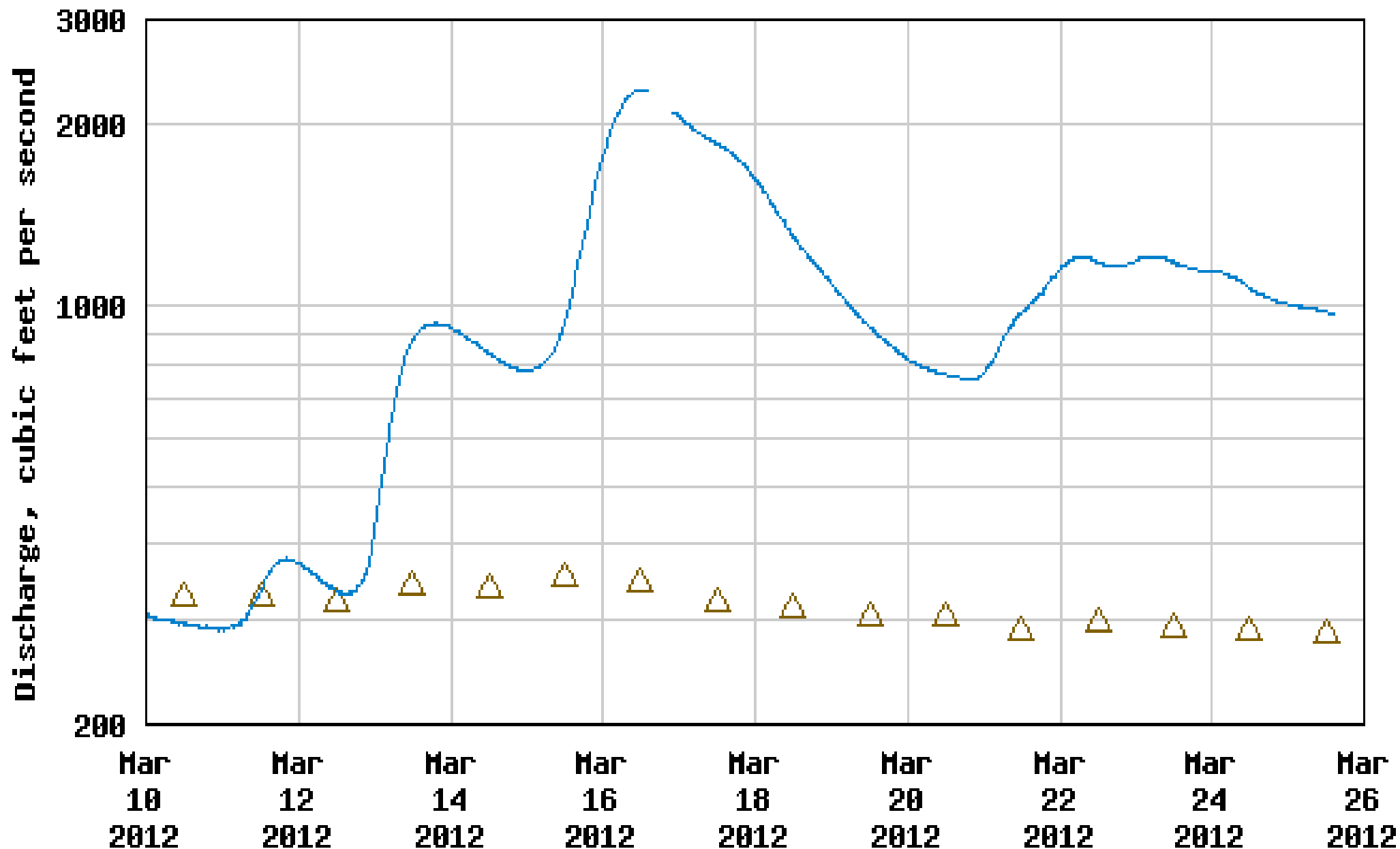
Init: 12 UTC Thu 15 Mar 12

Valid: 18 UTC Thu 15 Mar 12 (11 PDT Thu 15 Mar 12)

in past 3 hrs (.01in)
Pressure (hPa)



USGS 14166500 LONG TOM RIVER NEAR NOTI, OR



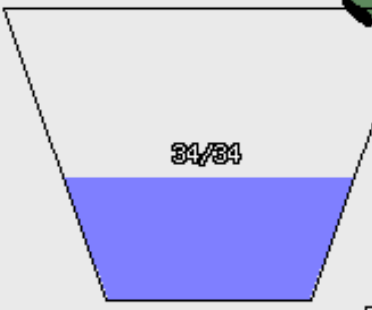
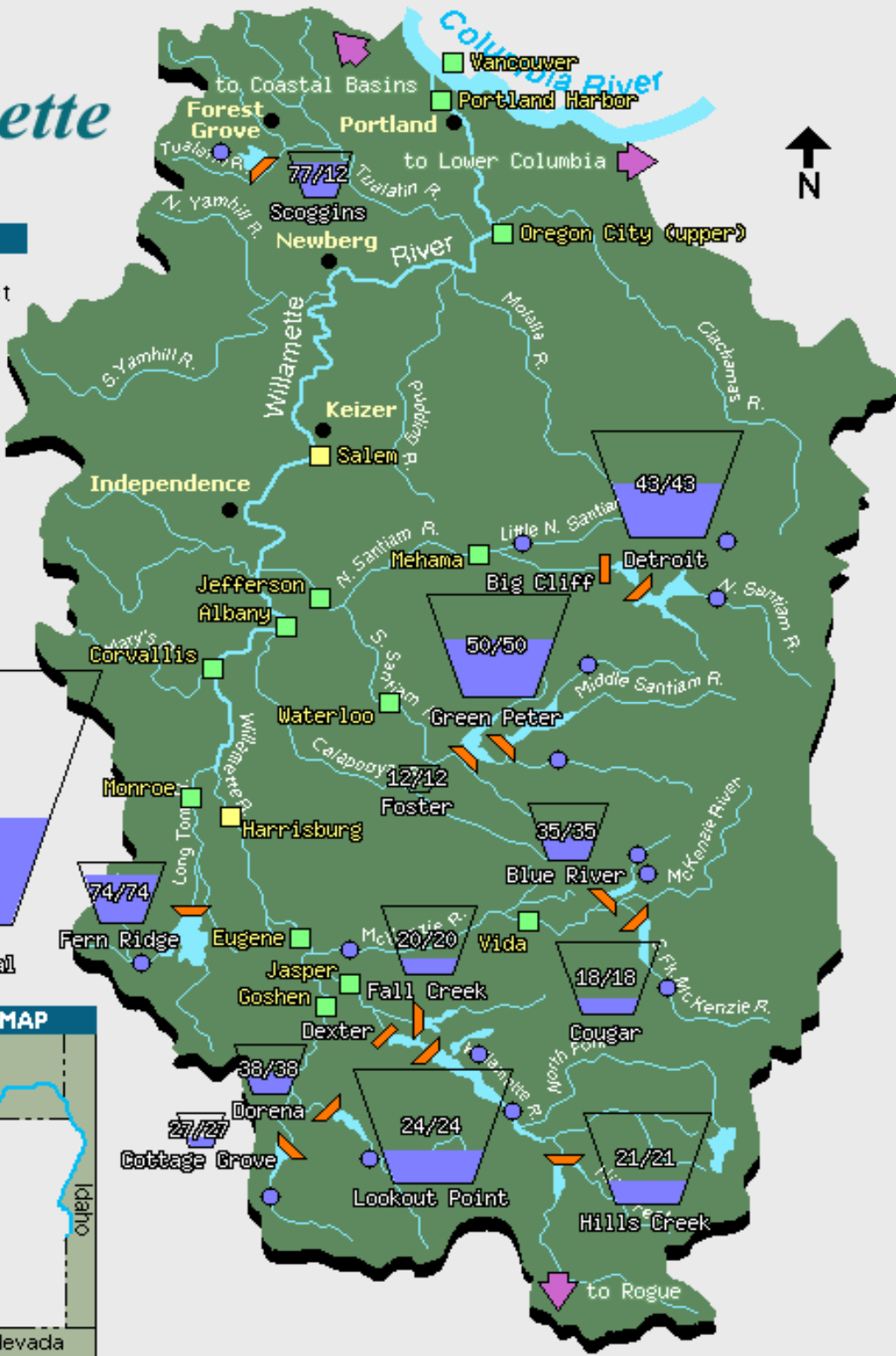
---- Provisional Data Subject to Revision ----

△ Median daily statistic (76 years) — Discharge

The Willamette Basin

LEGEND

-  Storage Project
-  Run of River
-  Gage
-  No Alerts
-  Bank Full
-  Flood Stage



Willamette Total



Teacup Diagram

(only relevant at early or late season)

Willamette Basin average and individual Reservoirs
 Snapshot Jan. 24, 2012

(after storm Jan. 17++,
 6000 cfs @ Noti : teacup
 up from from 23% to
 74% in 5 days)

Normally, the numbers
 show percentage ratio:

Current / +/- deviation from
 median

(for unknown reason +/-
 deviation was missing at day of
 capture)

Previous slides show storms on Mar 12 and 15, resulting in peak flows on Long Tom River @Noti

- Overview. From there select 3-hour precipitation LOOP:
<http://www.atmos.washington.edu/mm5rt/extendedgfsinit.html>
- USGS flow data for Noti
- http://waterdata.usgs.gov/or/nwis/uv/?site_no=14166500
- Reservoir level:
<http://www.nwd-wc.usace.army.mil/nwp/teacup/willamette/>

Animated maps, precipitation, clouds, wind/temperature

- Look at maps and animations early and often to establish comfort level with prediction
<http://www.atmos.washington.edu/mm5rt/extendedgfsinit.html>

UW WRF-GFS 36km Domain

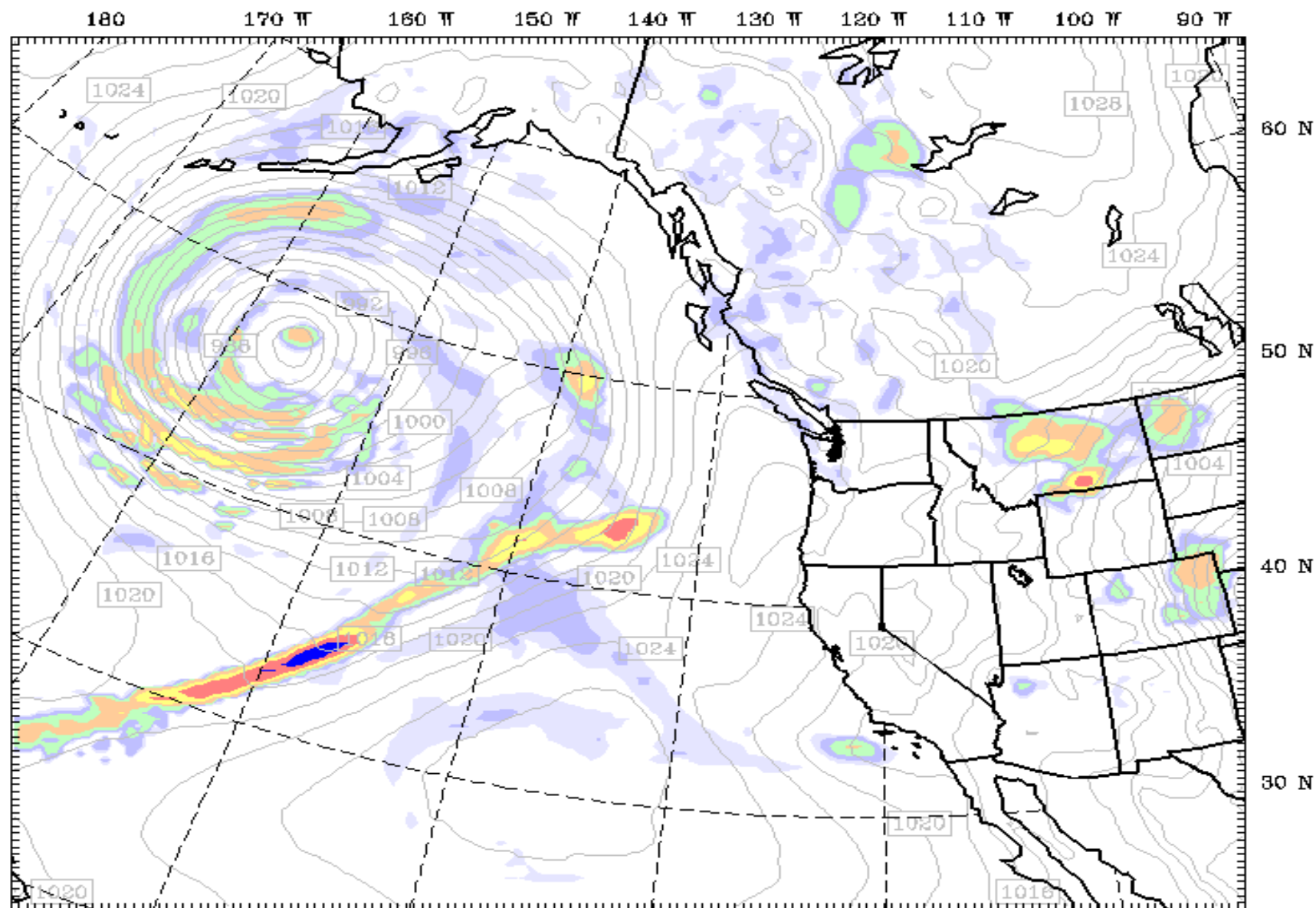
Fest: 126 h

Total Precip in past 3 hrs (.01in)

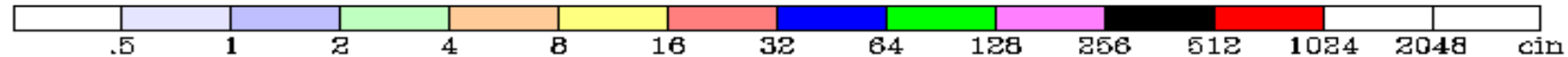
Sea Level Pressure (hPa)

Init: 12 UTC Mon 09 Apr 12

Valid: 18 UTC Sat 14 Apr 12 (11 PDT Sat 14 Apr 12)



CONTOURS: UNITS=hPa LOW= 984.00 HIGH= 1028.0 INTERVAL= 2.0000



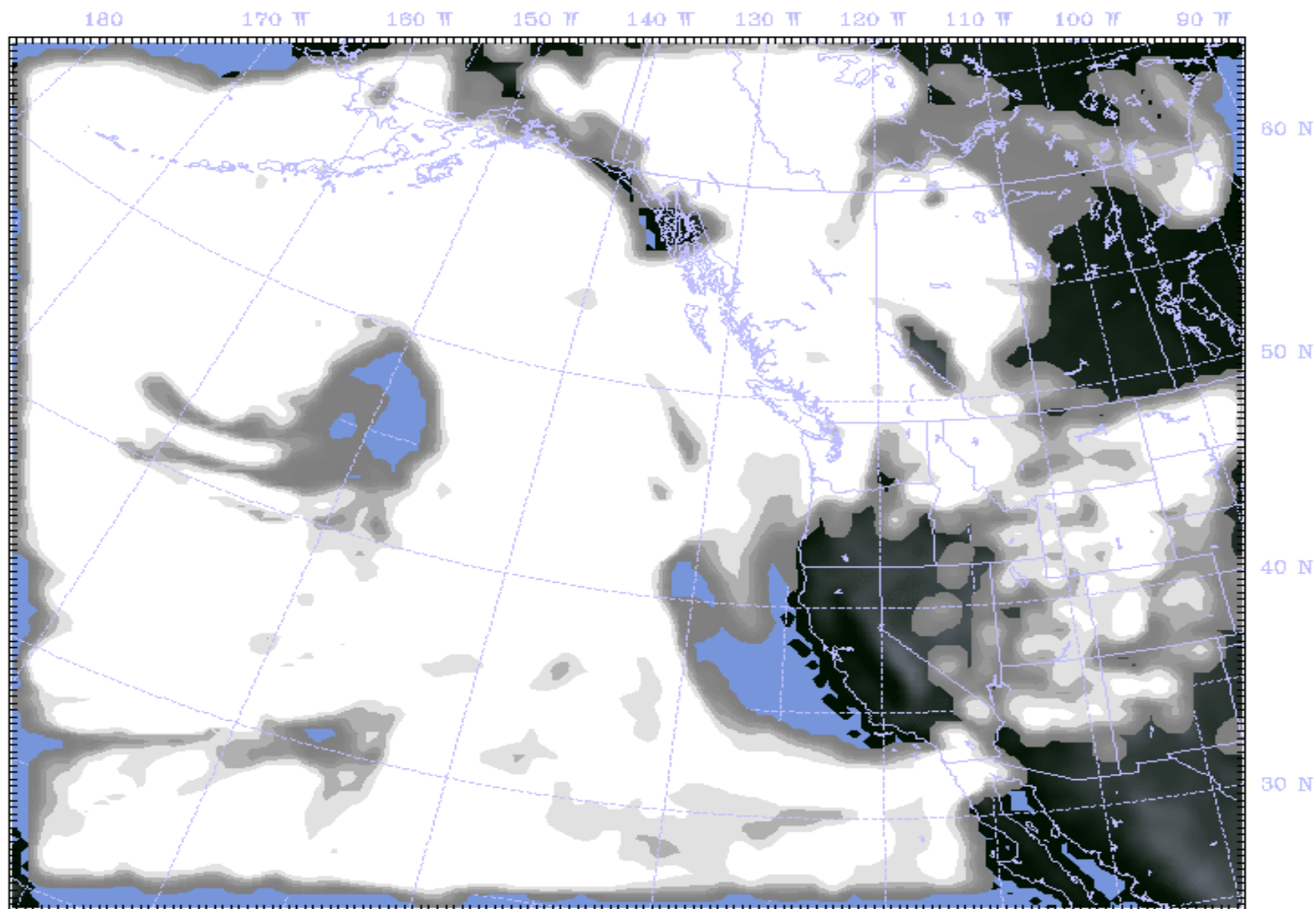
Model Info: V3.1.1 KF-old YSU PBL Thompson Ther-Diff 36 km, 37 levels, 216 sec
LW: RRTM SW: Dudhia DIFF: simple KM: 2D Smagor

UW WRF-GFS 36km Domain

Fest: 129 h

Init: 12 UTC Mon 09 Apr 12
Valid: 21 UTC Sat 14 Apr 12 (14 PDT Sat 14 Apr 12)

Column-integrated cloud water (mm) + Model terrain



Model Info: V3.1.1 KF-old YSU PBL Thompson Ther-Diff 36 km, 37 levels, 216 sec
LW: RRTM SW: Dudhia DIFF: simple KM: 2D Smagor

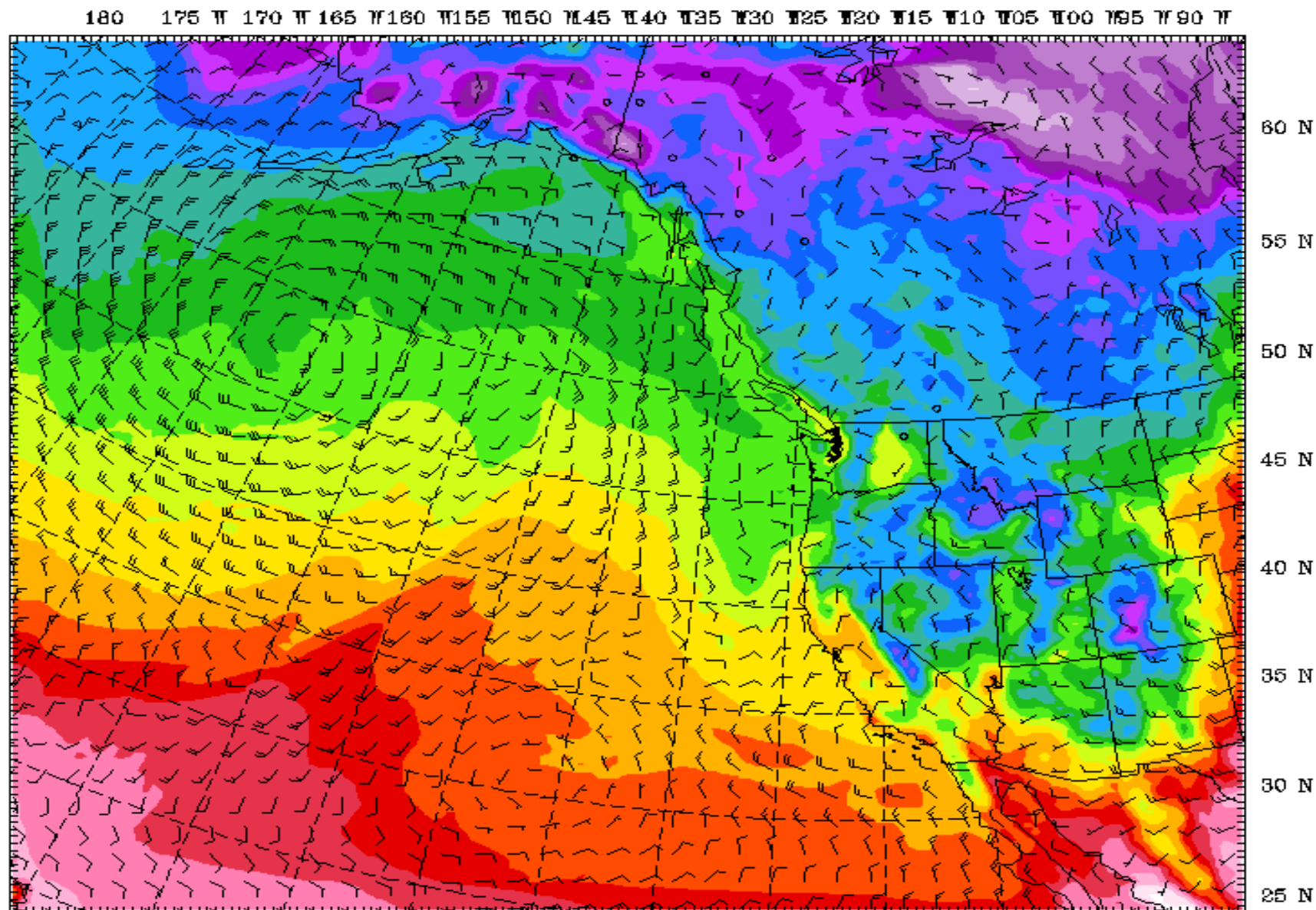
UW WRF-GFS 36km Domain

Init: 12 UTC Mon 09 Apr 12

Fest: 126 h

Valid: 18 UTC Sat 14 Apr 12 (11 PDT Sat 14 Apr 12)

2m Temperature (°F) ----- 10m Wind (full barb = 10kts)



BARB VECTORS: FULL BARB = 10 kts



Model Info: V3.1.1 KF-old YSU PBL Thompson Ther-Diff 36 km, 37 levels, 216 sec
LW: RRTM SW: Dudhia DIFF: simple KM: 2D Smagor

Full Moon Paddles

- One to two days before the “full moon” are the best: The moon rises while sun is setting, and return paddle can be done at moon light
- Look for daytime of “full moon”, not just date
- <http://www.sunrisesunset.com/usa/Oregon.asp>

Part 3: Slide Show

Unpublished photos and slides from

- http://canoe.freeshell.org/slideshows/FernRidge_CoyoteCreek/
- <http://canoe.freeshell.org/slideshows/LongTom/>

Specifically:

- http://canoe.freeshell.org/slideshows/FernRidge_CoyoteCreek/FernRidge_mar2008/
- http://canoe.freeshell.org/slideshows/FernRidge_CoyoteCreek/FernRidge_aug2008/
- http://canoe.freeshell.org/slideshows/FernRidge_CoyoteCreek/FernRidge_feb2010/
- http://canoe.freeshell.org/slideshows/FernRidge_CoyoteCreek/July2010_mooning/
- http://canoe.freeshell.org/slideshows/LongTom/LongTom_OCF/
- http://canoe.freeshell.org/slideshows/LongTom/LongTom_to-Ferguson_nov2010/
- <http://canoe.freeshell.org/slideshows/LongTom/Territorial-to-dam/>

References

Fern Ridge, general:

<http://www.fernridgelibrary.org/>

http://en.wikipedia.org/wiki/Fern_Ridge_Reservoir

<http://corpslakes.usace.army.mil/visitors/projects.cfm?Id=G205830>

<http://www.lanecountyhistoricalsociety.org>

Weather, river flow, teacup diagram:

- Extended GFS-Initialized Pacific Northwest WRF Weather Forecasts
<http://www.atmos.washington.edu/mm5rt/extendedgfsinit.html>
- USGS for Oregon -- select river, station, date range, output format
<http://waterdata.usgs.gov/or/nwis/current?type=flow>
- WKCC, Pat Welch, for Oregon
<http://levels.wkcc.org/?P=Oregon.html>
- Teacup: U.S. Army Corps of Engineers' Portland District
<http://www.nwd-wc.usace.army.mil/nwp/teacup/willamette/>

References, cont.

Sunset/moon rise for Oregon:

<http://www.sunrisesunset.com/usa/Oregon.asp>

Audobon Society:

<http://audubonportland.org/local-birding/iba/iba-map/fernridge>

<http://iba.audubon.org/iba/profileReport.do?siteId=2484>

Local Paddling Supply:

- Oregon Paddle Sports (OPS), West-Eugene; sales, advise, rental

<http://www.oregonpaddlesports.com/>

For paddling organizations and more references go to:

http://canoe.freeshell.org/ccc_links.shtml