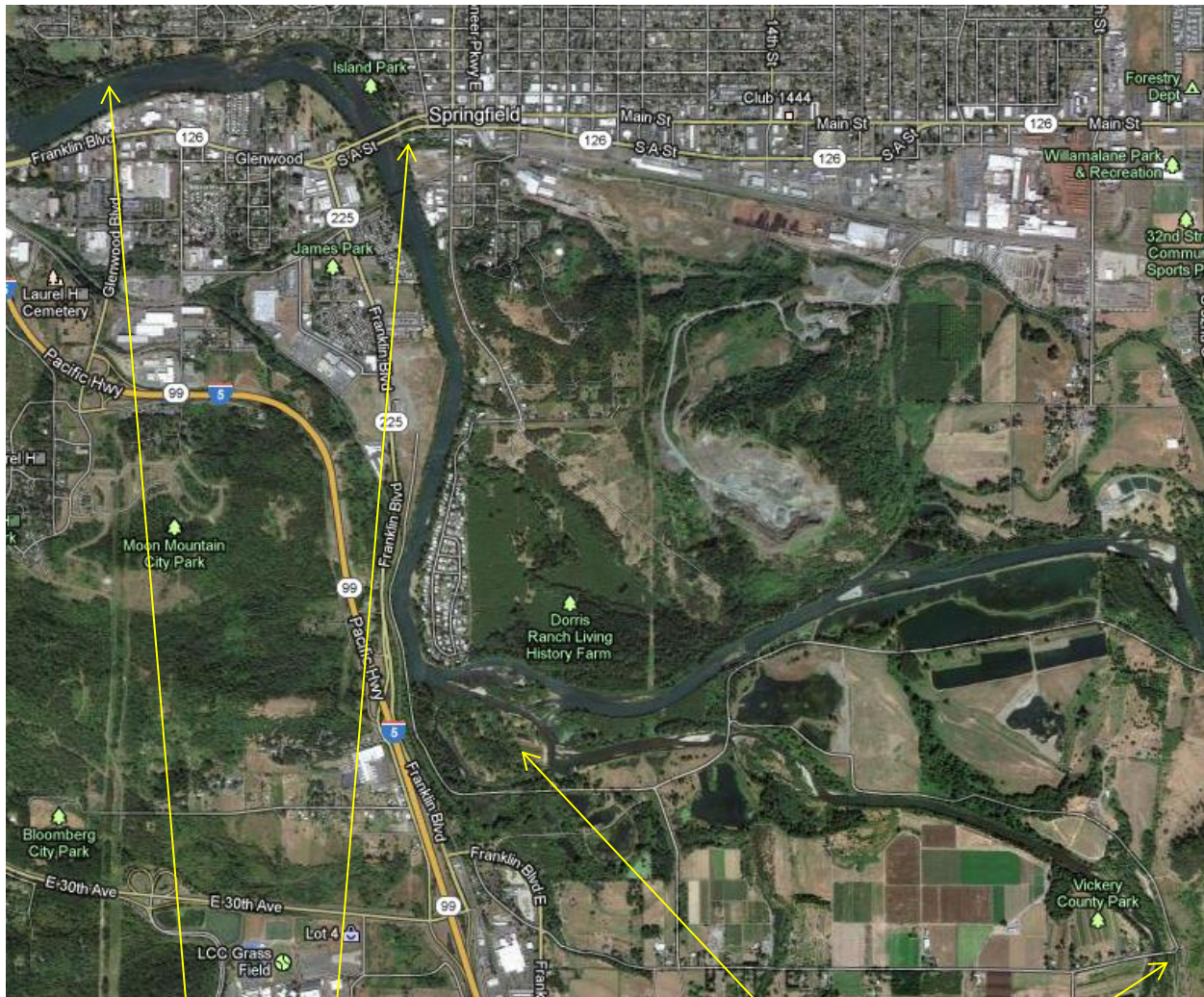


THIS IS A GUIDE. CONDITIONS ARE ALWAYS CHANGING. Skill level: class 1 rapids. Basic boat control and safety skills are needed. Distance: 4 miles. Time: 2 hrs Season: All year. Cautions: None



D Street take out (Optional Island Park Takeout) GlassBar Island Put in location

This is a short and easy float through the confluence of the Coast fork and Middle fork of the Willamette River. (**Caution:** It passes Glass Bar Island, a state owned park that is a popular nude beach and picnic area that is currently only accessible by boat) This section ends in the main channel of the Willamette River in Springfield Oregon. This Section can be an extension of River Map Three.

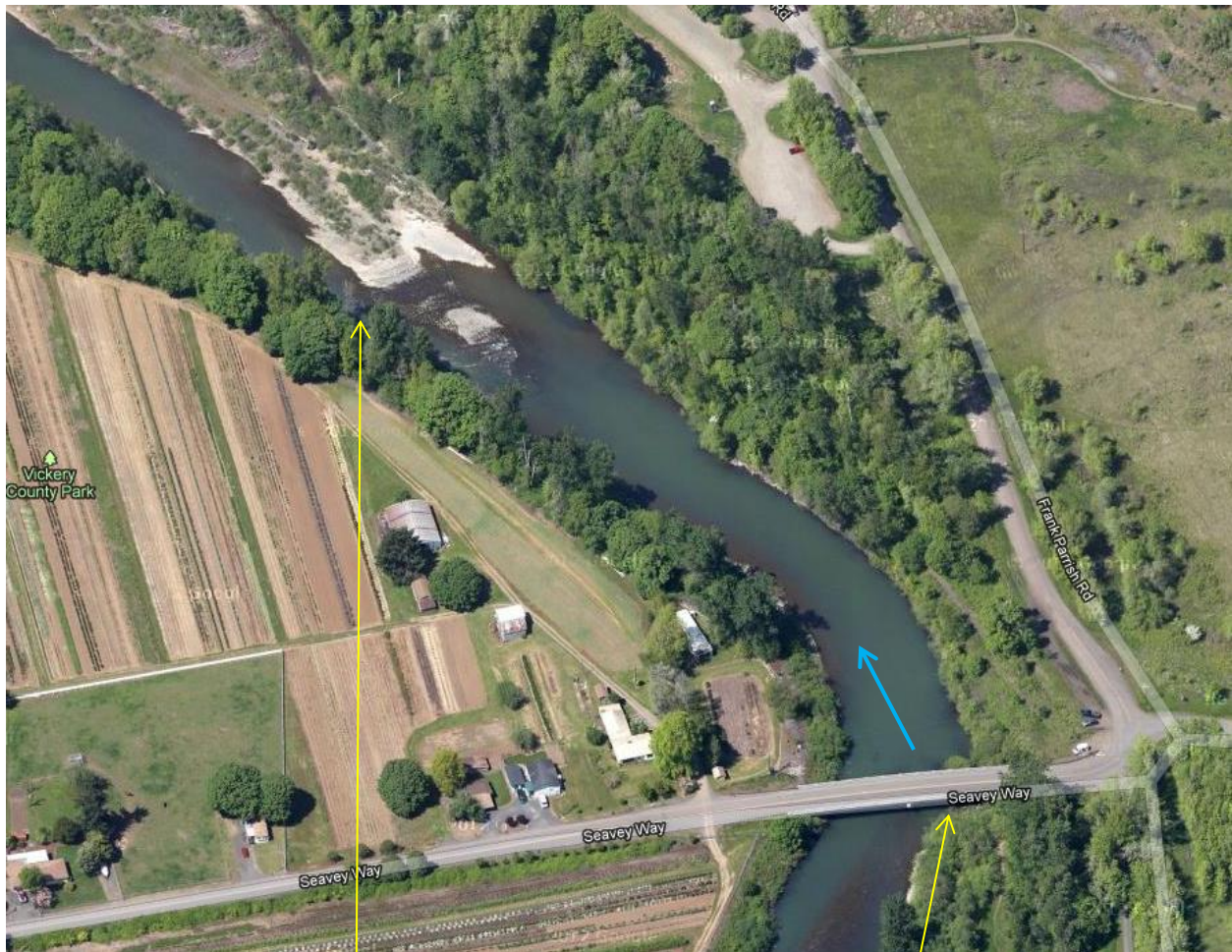
Put in Location: From Eugene Exit I-5 at 30th Avenue. Go East over the freeway and then left to the Shell Gas station. Turn right onto Franklin Blvd and then left onto Seavey Way Road. Follow Seavey Way Road to the Bridge over the river. The Put In is a primitive trail down under the upstream side of the bridge.
Note: A parking fee is required. A payment station for the park is up the road to the right of the bridge. A high fine is charged for non payment.

Howard Buford Park is a beautiful hiking area with trails to the top of Mount Pisgah with wonderful views, riverside walks and nature restoration projects.

Take out Location: There are two take out locations down stream. One is located at Island Park, the second is at D Street, both are drive in boat ramps Springfield. Island Park is located on South A Street just past the river bridge. Turn right after the bridge to enter the park.

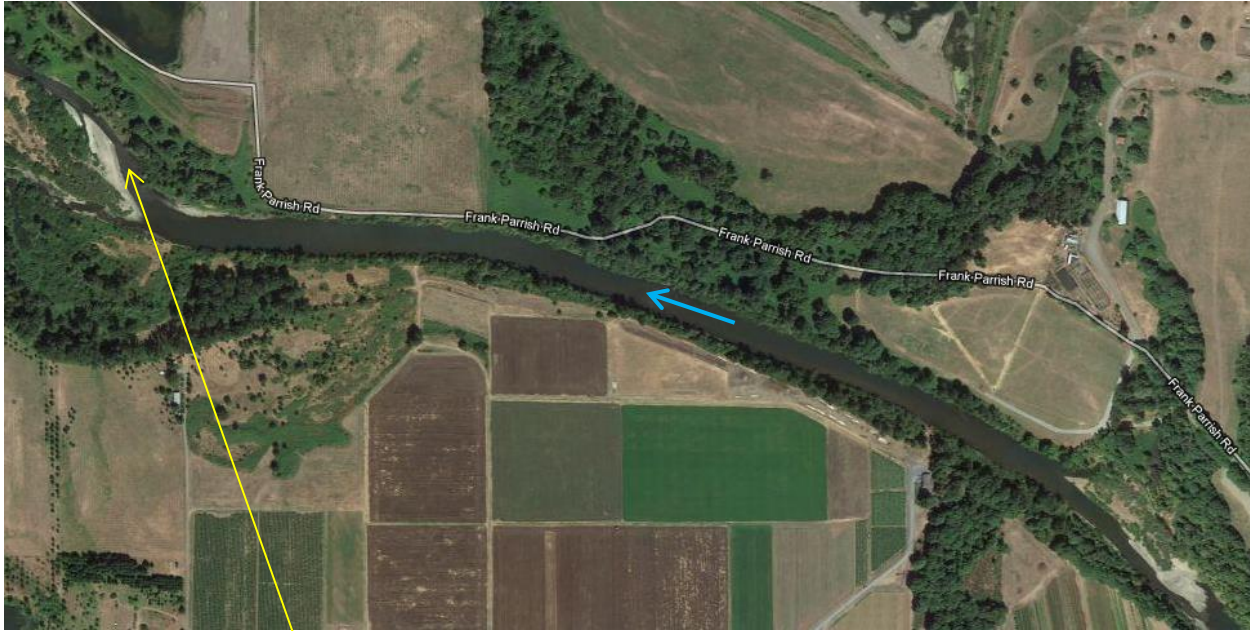
The D Street boat ramp is located further down- stream before the I-5 freeway bridge. From south A Street continue to Pioneer Parkway and turn left. Turn left at D Street to Aspen Street and turn left again into the park. The boat ramp is at the end of the road.

The Shuttle route is from Seavey Way right onto Franklin Blvd right onto South A Steet (Island Park) to Pioneer Parkway turn left. At D Street turn left to Aspen Street and then left to the boat ramp.



Riffles and brush on river left

Put in Location



River Narrows with riffles

This first section is bordered on the north by Nature Conservancy Property undergoing natural restoration. Public events are often held in the summer along with horse riding and nature walks.



Glass Bar Island

Middle Fork of the Willamette River

Wildish Bridge

Watch for brush around Wildish Bridge as you approach GlassBar Island. This is a popular picnic and public nude beach. Please be respectful of personal privacy. Access from land has recently been denied following the purchase of some of the surrounding river front land by the Nature Conservancy from the county. Restoration and habitat efforts are being made along much of this section of river.

Glass Bar Island is state land and is a water accessible public park as are many other islands in the river.



Riffles; stay on river left Shallow channel Swimming Lagoon Coast Fork Access from Middle Fork

The Confluence of the Coast fork and Middle forks create the main flow of the Willamette River as it begins its course north, one of the few rivers to do so in the United States. Other rivers add to its flow as it continues north meeting the Columbia River about 140 miles later near Portland Oregon. Historically it has been navigable as far south as Eugene. Once highly polluted, the Willamette is far cleaner and more beautiful due to continued efforts by various river conservancy groups and state agencies.

The various islands around Glass Bar Island are popular picnic, camping and nude sunbathing areas. However closure of access from land has reduced the usage significantly but improved safety and litter control. A nice shallow and warm swimming lagoon is available as well.

Access from the Middle Fork of the Willamette is possible via the Clearwater boat ramp upstream however the faster current requires foresight to ferry to river left in time. (Watch for overhead powerlines as a landmark upstream) The passages through are shallow and fast, so portaging may be needed as well.



As the river enters the urban area it passes various residential and industrial property in Glenwood and Springfield and although not very pretty, the river has some rock formations and bridges along the way as well.

Just pass the second road bridge is Island Park on the right. The optional boat ramp for takeout is under the bridge.

Island Park Boat Ramp

Railroad Bridge

Riffles

Riffles

Rocks



As you continue downstream around the bend in the river, you will encounter some shallow but rocky class one rapids. Stay to river left to avoid the rocks and paddle through some waves into calmer waters downstream. Shortly beyond is the D Street boat ramp and take out on river right.

The take out area features nice bike and walking paths through the forest along the river.

CAUTION: Downstream is the I-5 bridge construction site.

If you have the boating skills, you can navigate through the construction zone. **STAY ON RIVER RIGHT.** There are dangerous obstacles across the river upstream of the bridge.

Beyond are some beautiful stretches of river and some bigger rapids bordered by parks and bike paths through the city of Eugene.

D Street Take out and boat ramp

Safe passage on river right

DANGER low head dam and rip rap

Rocky rapids stay on river left

Island Park take out and boat ramp

For suggestions and updates to this map contact markmurphy1951@aol.com

Support protection of the Coast Fork of the Willamette River contact: www.Coastfork.org

Eugene Parks and Recreation offers classes in kayaking and water safety: www.Recenroll.org

Be sure you have proper safety equipment and understand water safety rules and signals.

Water conditions are always changing and **new hazards can appear at any time.**

Be sure you are prepared for current water conditions and cold water.

Tell people where you are going and when you will be back.

Never boat alone. Have experienced paddlers with you.

High water flows are not safe for water sports.

Local paddling clubs www.canoe.freeshell.org, www.facebook.com/potluckPaddlers, www.wkcc.org

Imagery copyright 2012 Digital Globe, Geo Eye, State of Oregon. Map data copyright 2012 Google

All maps are from Google Maps and are intended for personal and non profit use only.

The use of these maps and information is at YOUR OWN RISK.

No liability is assumed by the authors or sources for the correctness, suitability or timeliness of this information.